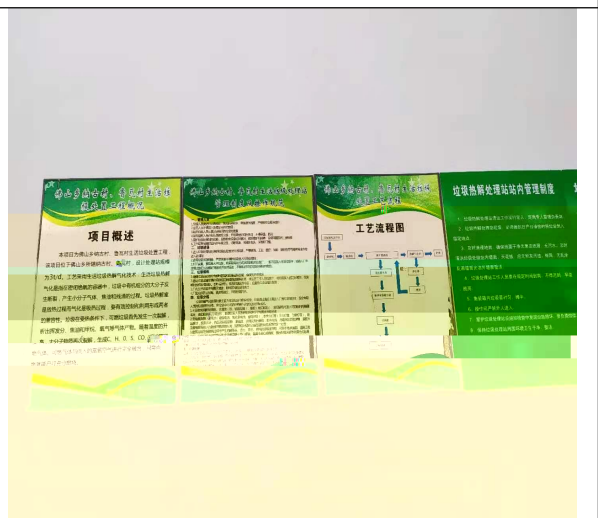
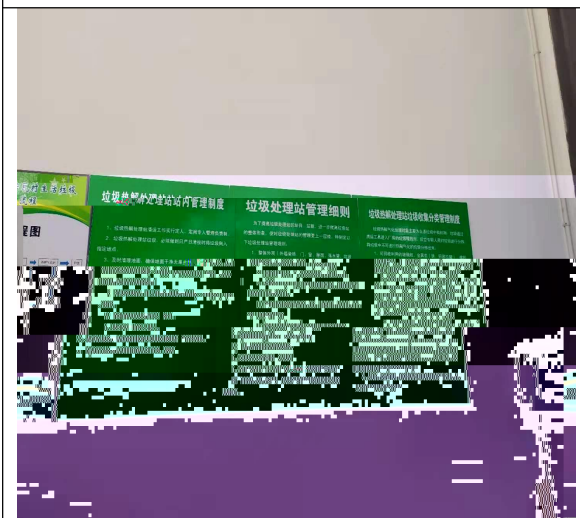
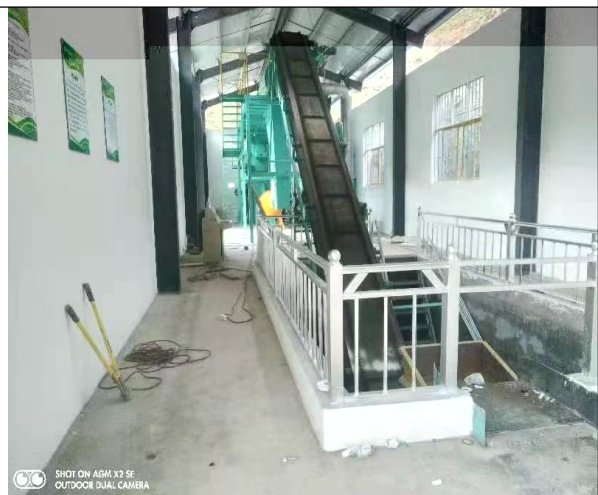
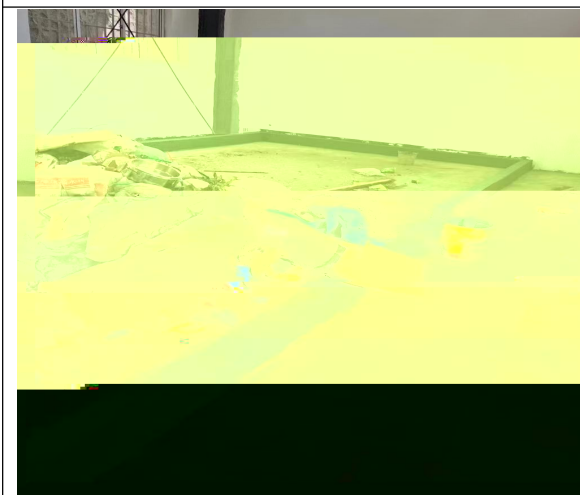
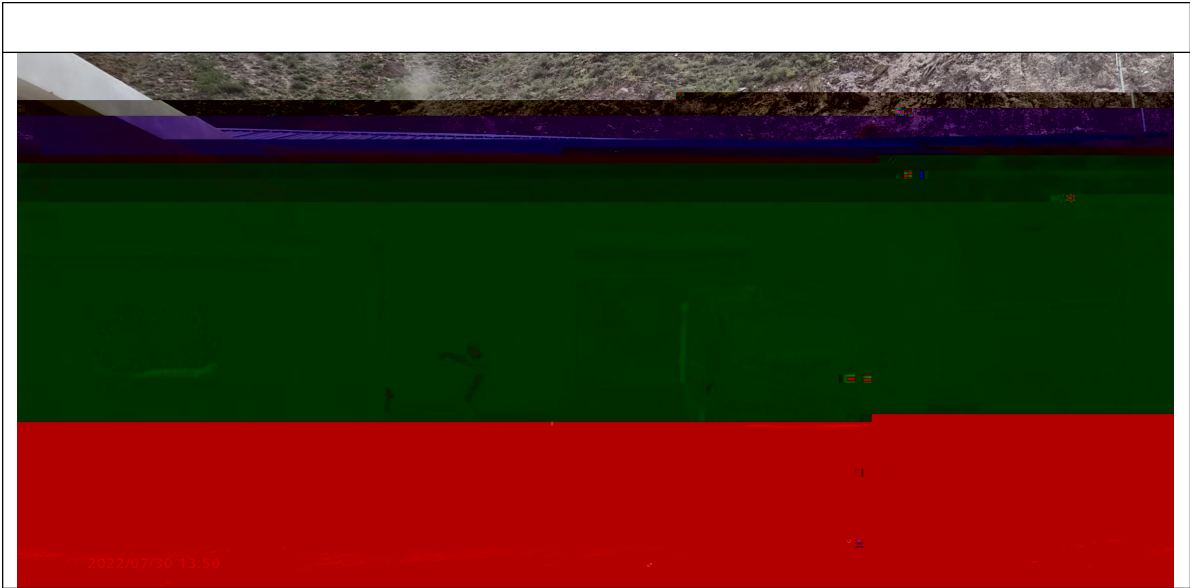
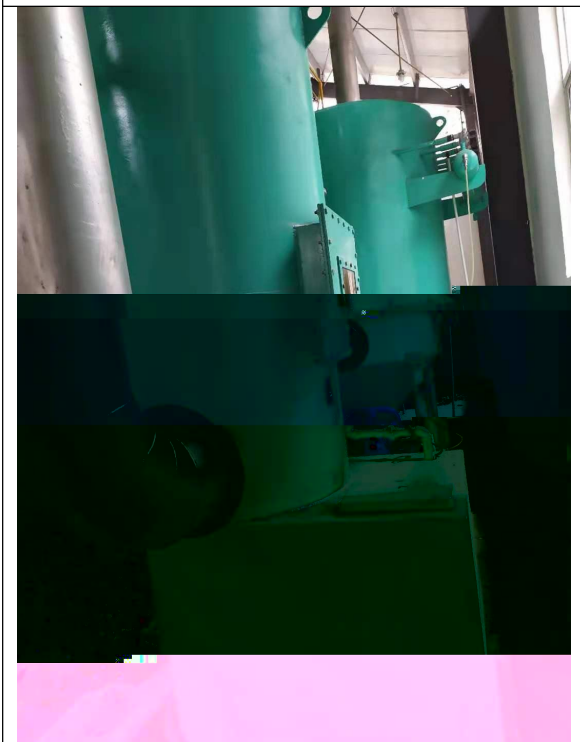


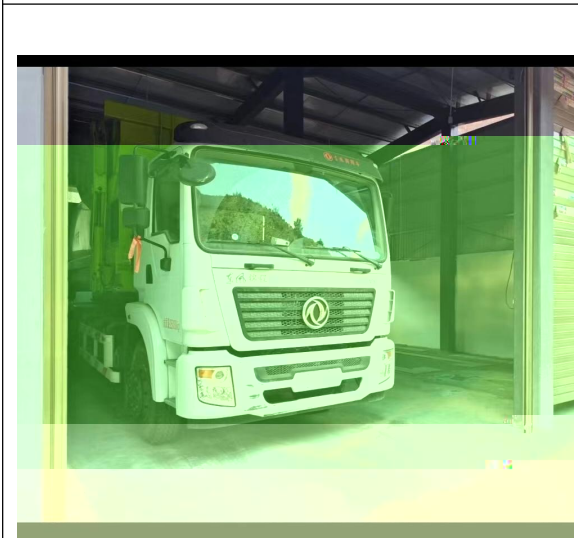
A00 "U6T00B")

A00 "U6T00B")

©.©© ©-©©









..... 1

..... 3

..... 8

..... 28

..... 33

..... 49

..... 52

..... 58

..... 71

..... 75

1

2

3

1.

2021 8

2.

3.

2021 57

4.

< 2020 29 > 2020 9 16

5.

6. 2021 55

7.

N KEBG20210623001

8.

2021 -1347

9.

2022 -1032

10.

1

11.

2

12.



867 1 3 / 1
 30 15 2 1

2020 7

2020 9 16
 < 2020 29 > 2 1

3 /
 1 30 15 2 1
 2 12
 2

16 / 867
 627 240 2019 7
 2020 10 2022 6
 500 56.2 11.24%
 421.86 43 10.19%

2021 8

1
 3 / 30

/

/

<

>

682

4

2020 29

2021 6 18

2021 7 29

2021 7 30

2022 7 1 2022

7 2

2021

6 7 2021 6 8

	13988731075		/		674599
					N7820
					867
		1 3/			30
	15	2		1	
			3/		30
			3/		30
	2020 7			2019 7	
				2021 7 29	
	--			2021 7 30	
	2020 10			2021 6 8 2021 6	
	--			9	
	2022 6			2022 7 1	
				2021 7 2	
	500		56.2		11.24%
	421.86		43		10.19%
	1		2014	2015 1 1	
	2			2015 8 29	
	2016 1 1				
	3		2017 6 27		
	4			2018 12	

GB18485-2014

1-1

GB14554-93

2

1-2

	1	30	
1	24	20	
	1	300	
2	24	250	
	1	100	
3	24	80	
	1	60	
4	24	50	/
	1	100	
5	24	80	
6		0.05	
7		0.1	
8		1.0	
9		0.1	TEQ/

1			10	20
2		/	1.0	1.5
3		/	0.03	0.06

GB16297-1996 2

1.0 / 1-4

	1.0 /

GB12348-2008 2

1-

5

~

- b

na

					2190 / SO ₂
	0.7 /	NO	1.14 /	0.001 /	219 TEQ/

28 42'47.11"

28 27'24.25"

98 41'06.71"

98 49'43.55"

			2021-04-29
			674500
	91533422MA6Q967019		

867

627

240

421.86

43

10.19%

1 3 /

1

30

15

2

1

2

12

16 /
 15
 867
 1 3/ 1
 1 1.5 1 1 1 4 1 6
 1 30 1 18 1
 8.4 1
 30 15 2 1 1
 4 1 4
 3-1 3-2
 2-1

			1 180 30 *6 *6	1 180 30 *6 *6	
			1 55 11 *6 *5 1# 2#	1 55 11 *6 *5 1# 2#	
			1 72 12 *6 *3	1 12 2 *6 *3	60

			6 /	/	6
			1 6 *3 *3 18	1 6 *3 *3 18	
			1 4 *3 *3 12	1 4 *3 *3 12	
			1 4.46	1 4.46	
			6	30	30 6
				4	1.5 / 1.5 60 2021 55

60

1.5

4

10 V

10 V

JKL J-16
S11-

JKL J-16
S11-M-

M-30KVA
S11-M-50KVA

30KV
S11-M-50KVA

GB18485-

15

85%

99.5%

90%

1

15

1



			60 1 1 2.6 16 1	1.5 1 1 2.6 16 1	60 55 1.5 4	1.5 2021 60 1.5 4
			90 4 1	1 4 1 4	90	1 4 5-1 4
			1	1	1	
			2	2	/	
			3	3		2021 55 1.5

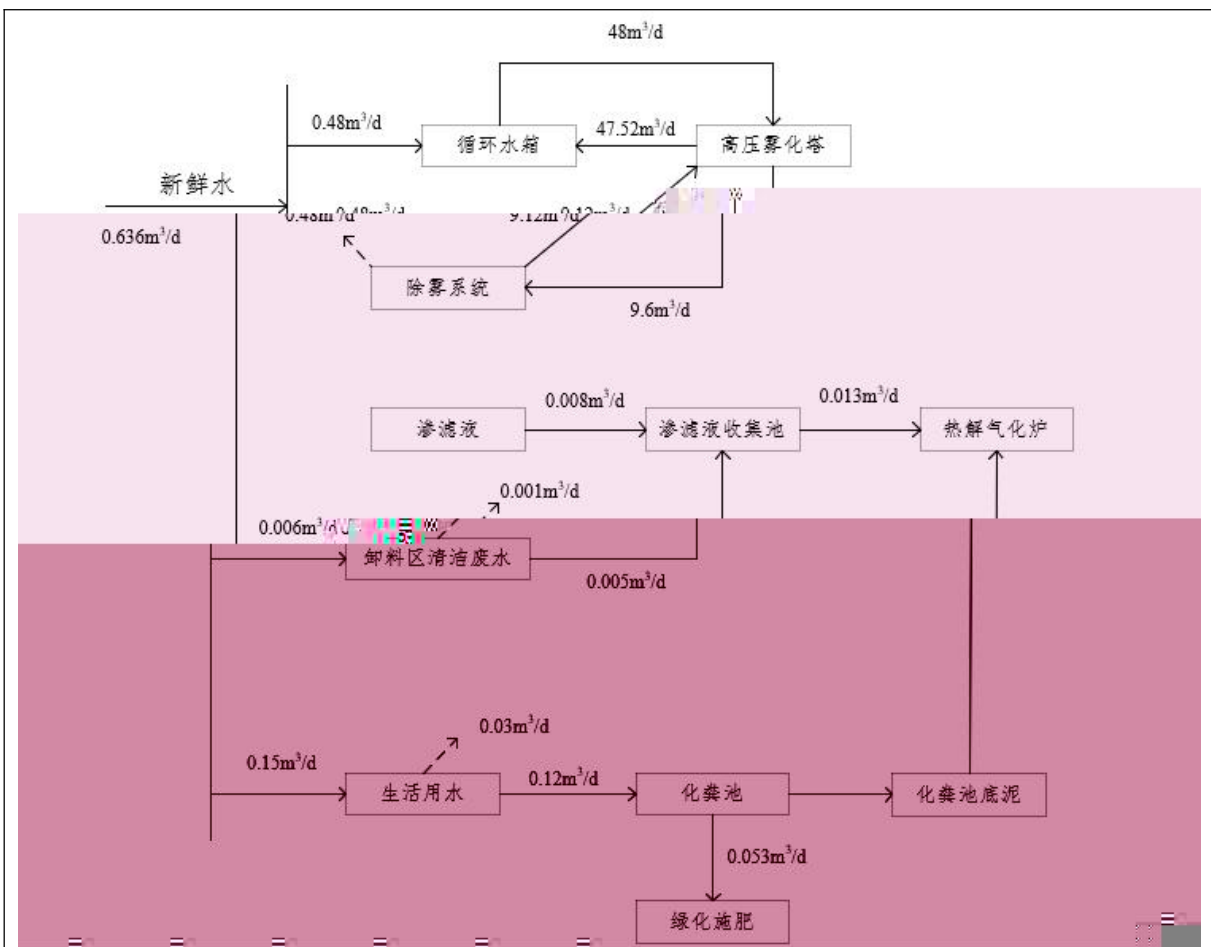
		4	4	2
		GB16889-2008 6.3		15 + +
		5	5	
		/	6	GB18485-2014
		6		
			2021 55	2021 57
			1.5	
		7	7	55 2021
			8	
		8	/	
		/	9	
			GB18597-	
			2001	
		1 16	1 16	
			2022 6	
		17.5	17.5	

			/	/	/
		70			
		1			
	53		9		
	1500				
	2		34200		
	2				
			230		
			220		
	21				
	466				
	415				
	3		55.75		
			10 /		
			2		
	200				
	4		9.66		
			20	20	
				6 /	
	6 /				

2-2

1		L5258 5	1		/
2		OVO S18/15-LA02	2		/
1			1		/
2			1		/
3		(1		/
1		39C-01310-A	1		/
2		300	1		/
3		39H20A-01058-A	1		/
4		39-02010	1		/
1		L S-600	1		/
2		LP-4050	1		/
3		LHS-3	1		/
4		L QH4-3	1		/
5		L JH-3	1		/
6		L R-3	1		/
7		L GD-20	3		/
8		L G -3	1		/
9		MC-3	1		/
10	PLC	28K	1		/
11			1		/
12			1		/
13			1		/

2-3



2-2



3

365

8

3

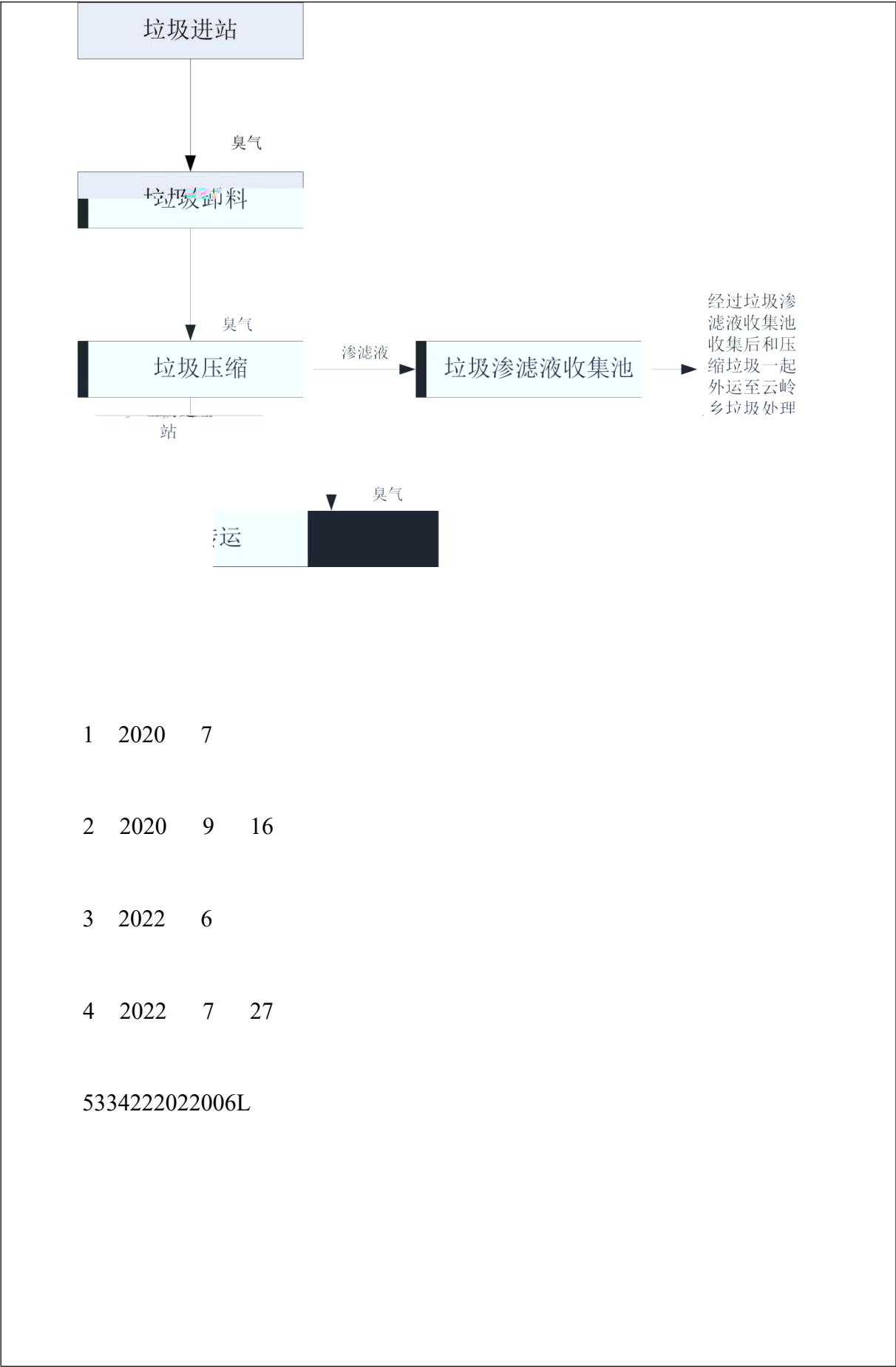
300

8

1

2-3





2018 7 17

2-4

1

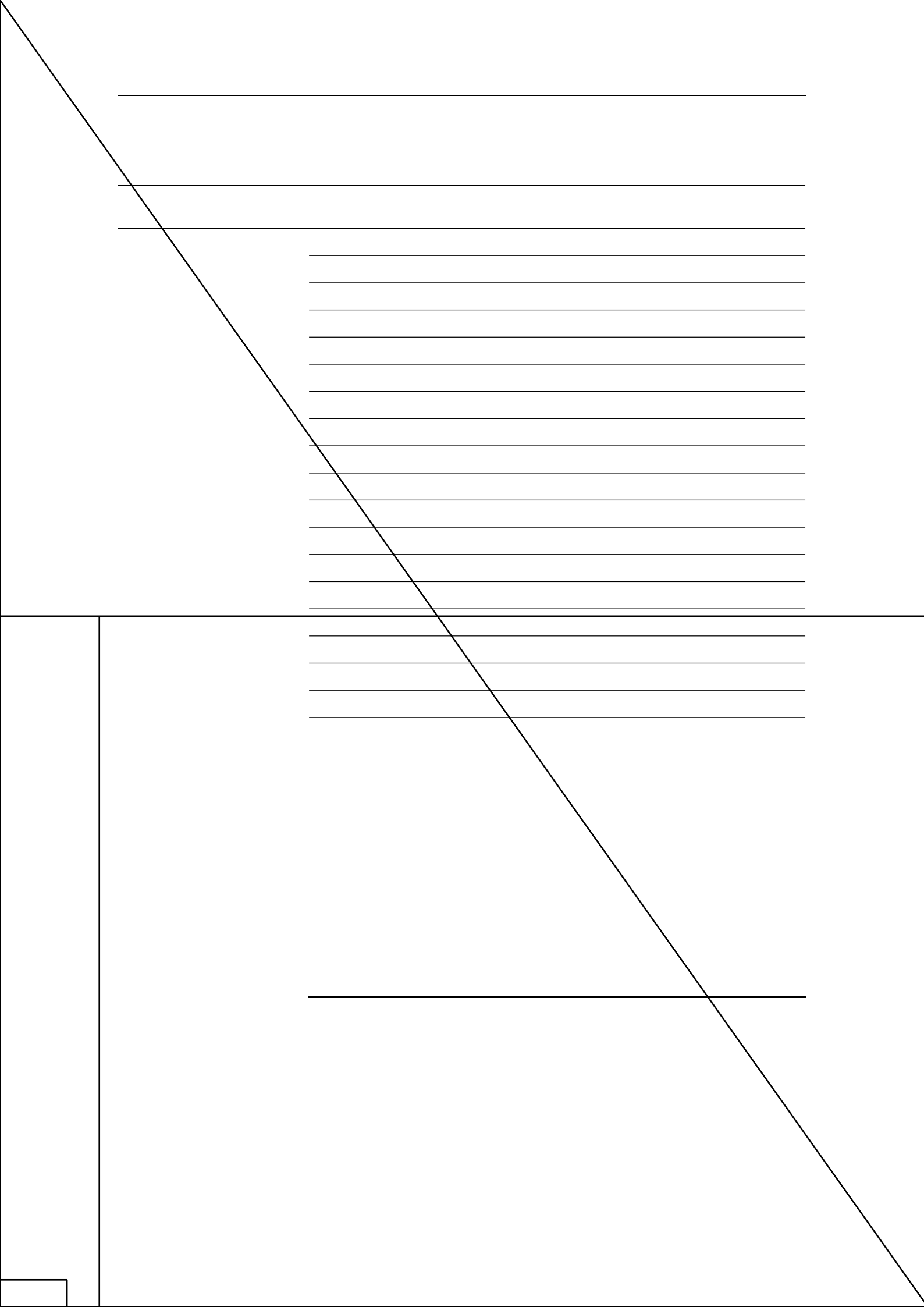
30

+ + + +
+

60

60

1.5



6		L R-3	1		/
7		L GD-20	3		/
8		L G -3	1		/
9		MC-3	1		/
10	PLC	28K	1		/
11			1		/
12			1		/
13			1		/

6t/d

3t/d

3t/d

+

+

+

+

+

+15

+

+

+15

2021 55

5-2

FQ01#

0.0 / 36 / 135 /
98 / 0.258 /
56.8 / 0.0489 / 0.0353 /
8.5 10⁻⁴ / 8.16 10⁻³ /
0.0238 / 4.65 10⁻⁴ / 6.32 10⁻³ /
0.01025 / 0.0146 / 3.28 10⁻⁶ /
0.043 / 0.0766 TEQ/

GB18485-2014

60
2021 55
2 60 1.5 5-

90 1 4

5-1 4

()

1		1 3 /		/
		1 30		
2	30%	1 3 /		/
		1 30		
3				/
4	() 10%	1 3 / 1 30		/
5	()	98 41'06.71" 28 42'47.11" 49'43.55" 28 27'24.25" 98	300	/
6	()	1 3 / 1		/

(1)	(30			
(2))				
(3)					
(4)	10%	10%			
					/
	10%				
6	(/
)				/
	10%				/
	(/
)				/
					/
	(
)				
		16			/

(

)

365 8 /

300 8 /

3.1



+

15

COD BOD₅ SS

COD BOD₅ SS

COD BOD₅ SS

1.5

COD BOD₅ SS

NH₃ H₂S

NH₃ H₂S

SO₂ NO CO

HC A H S C

C C C P M

N

+
+15

A

COD BOD₅ SS

6

3

3

7

1



1

1 3 /

1

30

15

2

1

867

627

240

500

56.2

11.24%

2

O

P

GB/M

F

Y

O

2

3

< 2020 29 >

:2019-

533422-77-01-007170

1 3 /

1

30

15

2

1

500

56.2

10.24%.

2019 74

()

()

;

;

;

()

()

()

(GB12523-2011)

22:00 6:00

()

()

()

" "

< 2020 29 >

4-1 4-2

1

2

3

4

5

6

7

8

1

2022 6

2022 7 27

5334222022006L

1	<p>77-01-007170</p> <p>1 3 /</p> <p>30 15</p> <p>1 2</p> <p>1</p>	<p>2019-533422-</p> <p>1 3 /</p> <p>1 30 15</p> <p>2 1</p> <p>867 627</p> <p>240</p>	
2			
3		<p>1.5</p> <p>90</p>	<p>1.5</p> <p>2021 55</p>

		1 4 0.81 / 4	1 5-1 4	60 1.5 5-1 4
4			/	
5	600	+ 15	+ 2021 55	2021 55
			5-2	

		<p style="text-align: center;">FQ01#</p> <p>0.0 / 36 /</p> <p>135 /</p> <p>98 / 0.258 /</p> <p>56.8 / 0.0489 /</p> <p>0.0353 / 8.5 10⁻</p> <p>4 / 8.16 10⁻³ /</p> <p>0.0238 / 4.65 10⁻⁴ /</p> <p>6.32 10⁻³ /</p> <p>0.01025 / 0.0146 /</p> <p>3.28 10⁻⁶ / 0.043 /</p> <p>0.0766 TEQ/ GB18485-2014 600</p>	<p style="text-align: right;">5-</p> <p style="text-align: center;">2</p>
6	<p>(GB12523-2011)</p> <p style="text-align: center;">22:00 6:00</p>		
7		<p style="text-align: right;">2021</p> <p style="text-align: center;">-106</p>	<p style="text-align: center;">2021</p> <p style="text-align: right;">-</p>

		10 1	106
			10 1
8			
9			
1			
		2021 55	1.5
			2
+	+	15	
		GB18485-2014	
		2021 57	
			2021
55			

3

1 4

0.81 /

5-1

4

4

2021

-106

10

1

5

5

1		15	1	15	+	+	
			FQ01#		0.0 /		
			36 /		135 /		
		90%	98 /		0.258 /		2021 55
		10%	56.8 /		0.0489 /		
			0.0353 /		8.5 10 ⁻⁴ /		
			8.16 10 ⁻³ /		0.0238 /		
			4.65 10 ⁻⁴ /		6.32 10 ⁻³ /		
			0.01025 /		0.0146 /	3.28 10 ⁻	
			6 /		0.043 /		
			0.0766 TEQ/ 2014			GB18485-	
						2021	

			<p>57</p> <p style="text-align: right;">2021 55</p> <p>2 + + + +</p> <p>+</p> <p style="text-align: center;">4</p> <p>FQ02# FQ03# FQ04# FQ05# 4</p> <p>0.383 /</p> <p style="text-align: center;">GB16297-1996</p> <p>0.05 / 0.014 /</p> <p>15 GB14554-93</p> <p>1 1.5 /</p> <p>0.06 / 20</p> <p>3</p> <p style="text-align: right;">4</p> <p style="text-align: right;">FQ01#</p> <p>FQ02# FQ03# FQ04# 4 0.06</p> <p>/ 0.006 / 14</p> <p style="text-align: right;">GB14554-93 1</p> <p>1.5 / 0.06</p> <p>/ 20</p> <p>1</p>	
2			2021 55	1

1.5

2

3



		<p>GB16889-2008 6.3</p> <p>5</p> <p>6 /</p> <p>7</p> <p>8</p> <p>9 /</p> <p>2001</p> <p>GB18597-</p>	<p>1.5</p> <p>7</p> <p>8 /</p> <p>9</p> <p>GB18597-2001</p>	<p>2</p> <p>+</p> <p>+</p> <p>15</p> <p>GB18485-2014</p> <p>57</p> <p>2021</p> <p>2021</p>
--	--	--	---	--

				55
5		1 16	1 16 2022 6 5334222022006L	2022 7 28
1				
2021 55				
1.5				
2			+	+
15				
GB18485-2014				
2021 57				

1 4

0.81 /

5-1

4

4

+

4

FQ02#

FQ03#

FQ04#

FQ05#

4

0.383 /

GB16297-1996

0.05 /

0.014

/ 3

15

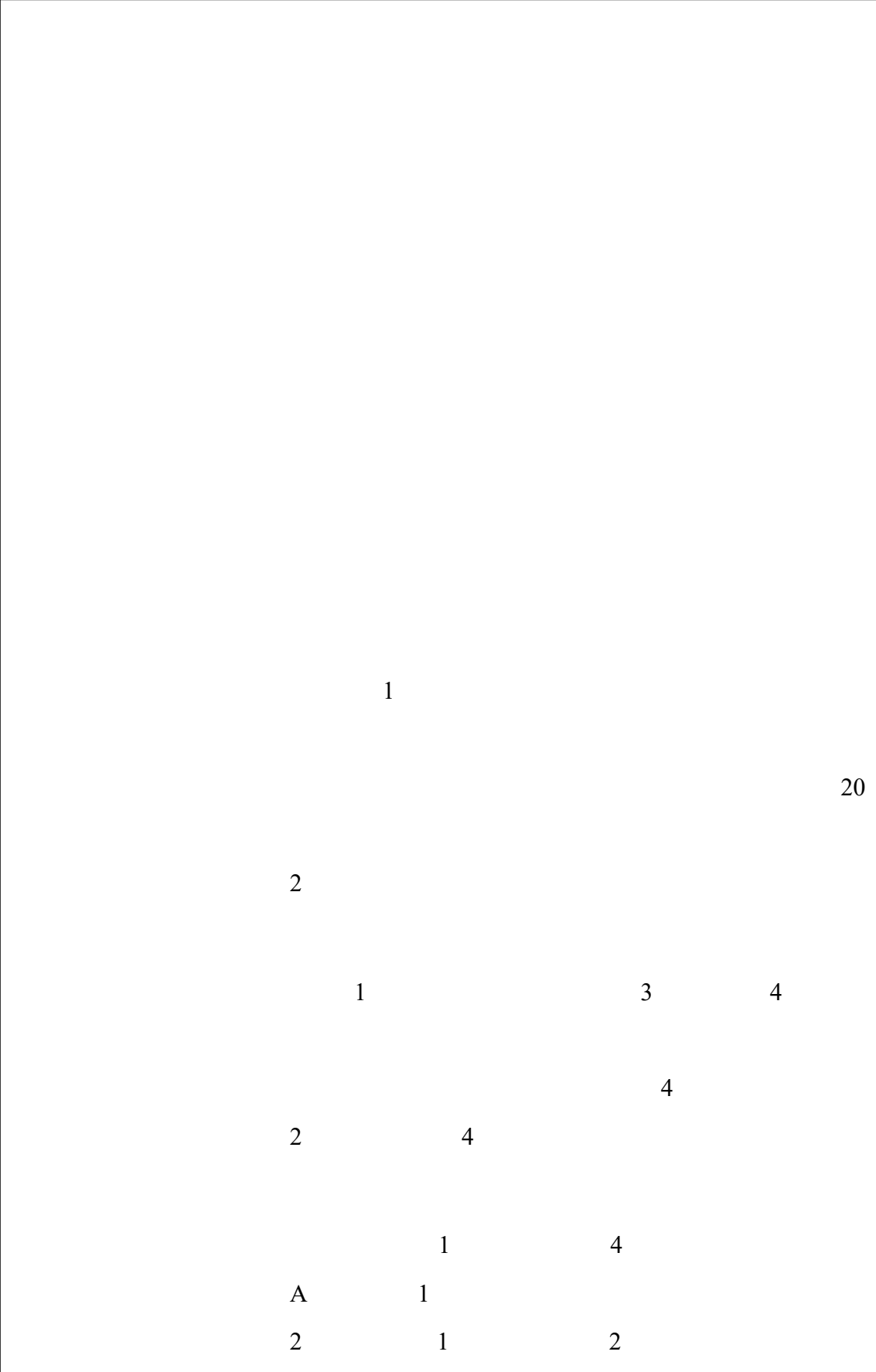
GB14554-93

1

1.5 /

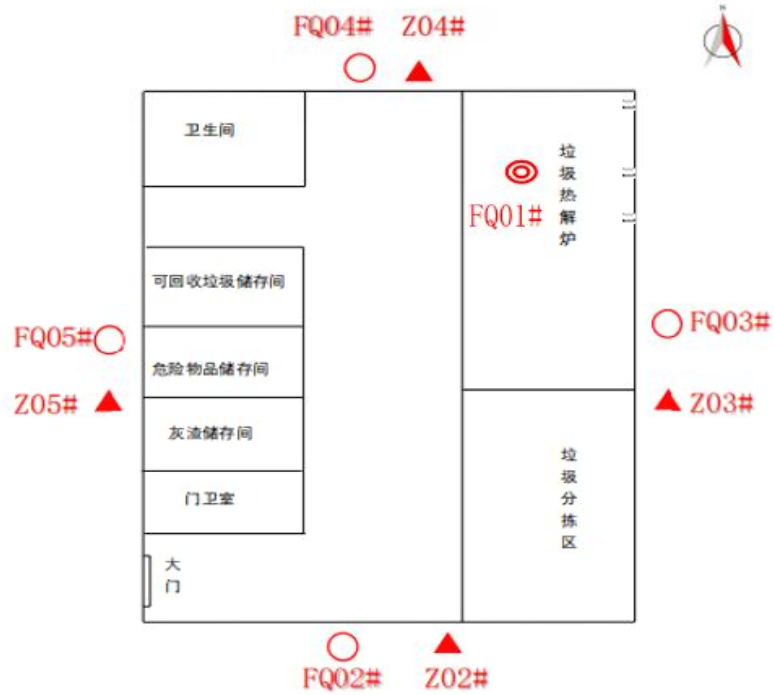
0.06 /

20



	1		3	4
				4
2		4		
		1		4
A		1		
2		1		2

5-1



▲ 噪声监测点

○ 无组织废气监测点

◎ 固定污染源废气监测点

德钦县佛山... 再... 站



1 6-2 6-3

6-

1		GB/T16157-1996	3012H CP224C	/	CQJL-186 CQJL-112	

2		2003	/ TSP 2050	0.01 /	CQJL-102 CQJL-114	
3		HJ57-2017	3012H	3 /	CQJL-186	
4		HJ693-2014	3012H	3 /	CQJL-186	
5		HJ973-2018	3012H	3 /	CQJL-186	
6		HJ685-2014	F - 130A	0.01 /	CQJL-106	
7		HJ548-2016	/ TSP 2050	2 /	CQJL-102 CQJL-246	
8		HJ533-2009	/ TSP 2050 722S	0.25 /	CQJL-102 CQJL-114	
9		HJ657-2013	CAP-RQ	0.150	HJ Q-2019-004	
10		HJ657-2013	CAP-RQ	0.040	HJ Q-2019-004	
11		HJ657-2013	CAP-RQ	0.005	HJ Q-2019-004	

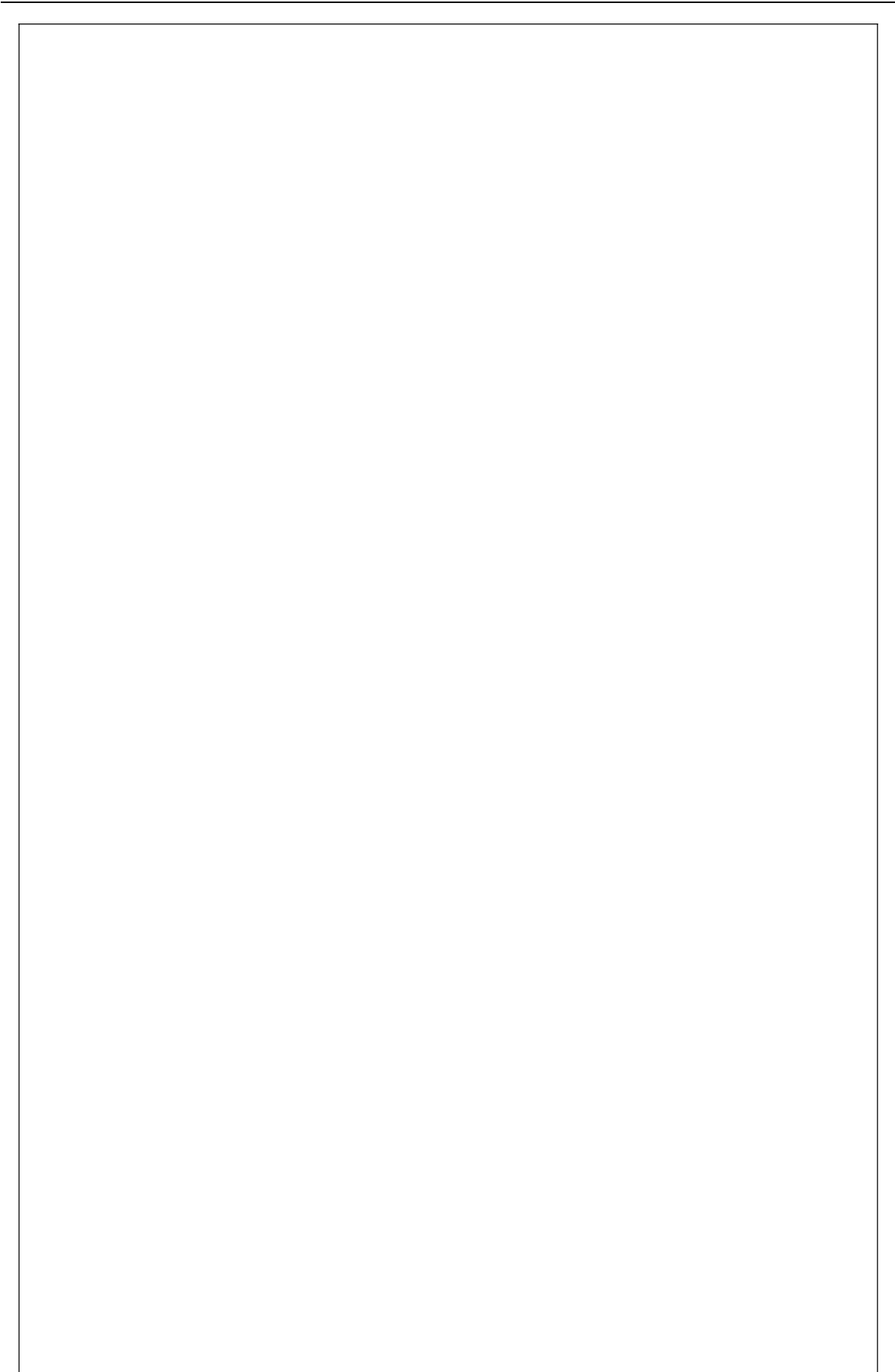
12		CAP-RQ	0.100	HJ Q-2019-004
	HJ657-2013			
13		CAP-RQ	0.100	HJ Q-2019-004
	HJ657-2013			
14		CAP-RQ	0.005	HJ Q-2019-004
	HJ657-2013			
15		CAP-RQ	0.100	HJ Q-2019-004
	HJ657-2013			
16		CAP-RQ	0.005	HJ Q-2019-004
	HJ657-2013			
17		CAP-RQ	0.015	HJ Q-2019-004
	HJ657-2013			
18		F732-V	0.0025	HJ Q-2019-099
			/	
19	()	/	2000	/ /
	GB/T14675-93			
20		/	20	/ /
	GB/T14675-93			

	HJ77.2-2008	- DFS	0.1 TEQ/	STT- FQ114	
		GH-6033		STT- C374	
		CS- MRCA4002421		STT- C375	

1		GB 12348-2008	A A6228+ A A6221A	CQJL- 216 CQJL- 116	

6-4

1		HJ533- 2009	0.01 /	/ TSP 2050 722S	CQJL-102 CQJL-103 CQJL-104 CQJL-129 CQJL-114	CQSG 090 CQSG 108
2		2003	0.001 /	/ TSP 2050 722S	CQJL-102 CQJL-103 CQJL-104 CQJL-129 CQJL-114	
3		GB/T14675-93	/	/	/	CQSG 051



7-1 7-2 7-3

FQ01#	2021/7/29	1347-FQ01-1-1	16.8	<20(12.0)	<48(28.6)	<0.016(0.009)	GB18485-2014 4	30 /		
		1347-FQ01-1-2	17	<20(11.6)	<50(29.0)	<0.017(0.010)				
		1347-FQ01-1-3	17.1	<20(11.3)	<51(29.0)	<0.016(0.009)				
			17	<20(11.6)	<50(28.8)	<0.016(0.009)				
		2021/7/30	1347-FQ01-2-1	17.2	<20(11.1)	<53(29.2)			<0.015(0.009)	
			1347-FQ01-2-2	16.7	<20(10.6)	<47(24.7)			<0.015(0.008)	
			1347-FQ01-2-3	17	<20(10.8)	<50(27.0)			<0.015(0.008)	
				17	<20(10.8)	<50(27.0)			<0.015(0.008)	
				17.0	0	0			0	
		2021/7/29	1347-FQ01-1-1	16.8	15	36			0.012	GB18485-2014 4
	1347-FQ01-1-2		17	13	33	0.011				
	1347-FQ01-1-3		17.1	11	28	0.009				
			17	13	32	0.01				
	2021/7/30		1347-FQ01-2-1	17.2	9	24	0.007			
			1347-FQ01-2-2	16.7	14	33	0.01			
			1347-FQ01-2-3	17	12	30	0.009			
				17	12	29	0.009			
			17.0	12.3	30.7	0.010				
	2021/7/29	1347-FQ01-1-1	16.8	48	114	0.038	GB18485-2014 4			
		1347-FQ01-1-2	17	54	135	0.045				
		1347-FQ01-1-3	17.1	51	131	0.04				

			17	51	127	0.041	300 /	
	2021/7/30	1347-FQ01-2-1	17.2	49	129	0.038		
		1347-FQ01-2-2	16.7	56	130	0.042		
		1347-FQ01-2-3	17	54	135	0.041		
			17	53	131	0.04		
			17.0	52.0	129.0	0.041		
	2021/7/29	1347-FQ01-1-1	16.8	35	83	0.028	GB18485-2014 4	
		1347-FQ01-1-2	17	39	98	0.033		
		1347-FQ01-1-3	17.1	36	92	0.028		
			17	37	91	0.029		
	2021/7/30	1347-FQ01-2-1	17.2	33	87	0.025	100 /	
		1347-FQ01-2-2	16.7	40	93	0.03		
		1347-FQ01-2-3	17	34	85	0.026		
			17	36	88	0.027		
			17.0	36.2	89.7	0.028		
	2021/7/29	1347-FQ01-1-1	16.8	0.01	0.0291	0.00000787	GB18485-2014 4	
		1347-FQ01-1-2	17	0.01	0.0311	0.00000837		
		1347-FQ01-1-3	17.1	0.01	0.0337	0.00000785		
			17	0.01	0.0313	0.00000803		
	2021/7/30	1347-FQ01-2-1	17.2	0.1	0.258	0.0000769	1.0 /	
		1347-FQ01-2-2	16.7	0.09	0.213	0.00006739		
		1347-FQ01-2-3	17	0.1	0.25	0.00007589		
			17	0.1	0.24	0.0000733		
			17.0	0.1	0.1358	4.071E-05		
	2021/7/29	1347-FQ01-1-1	16.8	21	50	0.017	GB18485-2014 4	
		1347-FQ01-1-2	17	22.7	56.8	0.019		
		1347-FQ01-1-3	17.1	21	53.8	0.016		
			17	21.6	53.5	0.017		
	2021/7/30	1347-FQ01-2-1	17.2	21	55.3	0.016	60 /	
		1347-FQ01-2-2	16.7	18.5	43	0.014		
		1347-FQ01-2-3	17	22.7	56.8	0.017		

			17	20.7	51.7	0.016	GB18485-2014 4 () 1.0 /	
			17.0	21.2	52.6	0.017		
	2021/7/29	1347-FQ01-1-1	16.8	0.00673	0.016	0.00000501		
		1347-FQ01-1-2	17	0.00583	0.0146	0.00000452		
		1347-FQ01-1-3	17.1	0.00594	0.0152	0.00000458		
			17	0.00617	0.0153	0.0000047		
	2021/7/30	1347-FQ01-2-1	17.2	0.0186	0.0489	0.0000139		
		1347-FQ01-2-2	16.7	0.0157	0.0365	0.0000118		
		1347-FQ01-2-3	17	0.0085	0.0213	0.00000627		
			17	0.0143	0.0356	0.0000107		
			17.0	1.02E-02	2.54E-02	7.68E-06		
	2021/7/29	1347-FQ01-1-1	16.8	0.0103	0.0245	0.00000766		
		1347-FQ01-1-2	17	0.00802	0.0201	0.00000622		
		1347-FQ01-1-3	17.1	0.0085	0.0218	0.00000655		
			17	0.00894	0.0221	0.00000681		
	2021/7/30	1347-FQ01-2-1	17.2	0.0134	0.0353	0.00001		
		1347-FQ01-2-2	16.7	0.013	0.0302	0.00000974		
		1347-FQ01-2-3	17	0.011	0.0275	0.00000812		
			17	0.0152	0.031	0.00000929		
			17.0	1.07E-02	2.66E-02	8.05E-06		
	2021/7/29	1347-FQ01-1-1	16.8	0.000219	0.000521	0.000000163		
		1347-FQ01-1-2	17	0.000158	0.000395	0.000000122		
		1347-FQ01-1-3	17.1	0.000179	0.000459	0.000000138		
			17	0.000185	0.000458	0.000000141		
	2021/7/30	1347-FQ01-2-1	17.2	0.000323	0.00085	0.000000242		
		1347-FQ01-2-2	16.7	0.000345	0.000803	0.000000259		
		1347-FQ01-2-3	17	0.000262	0.000654	0.000000193		
			17	0.00031	0.000769	0.000000231		
			17.0	2.48E-04	6.14E-04	1.86E-07		
	2021/7/29	1347-FQ01-1-1	16.8	0.0018	0.00429	0.00000134		
		1347-FQ01-1-2	17	0.00159	0.00398	0.00000123		

		2021/7/30	1347-FQ01-1-3	17.1	0.00167	0.00428	0.00000129	
				17	0.00169	0.00418	0.00000129	
			1347-FQ01-2-1	17.2	0.0031	0.00816	0.00000232	
			1347-FQ01-2-2	16.7	0.00305	0.00709	0.00000228	
			1347-FQ01-2-3	17	0.00258	0.00645	0.0000019	
			17	0.00291	0.00723	0.00000217		
			17.0	2.30E-03	5.71E-03	1.73E-06		
		2021/7/29	1347-FQ01-1-1	16.8	0.00415	0.0099	0.00000309	
				17	0.00462	0.0116	0.00000358	
				17.1	0.00472	0.0121	0.00000364	
	17			0.0045	0.0112	0.00000344		
	2021/7/30		1347-FQ01-2-1	17.2	0.00905	0.0238	0.00000677	
				16.7	0.00657	0.0153	0.00000492	
				17	0.00584	0.0146	0.00000431	
				17	0.00715	0.0179	0.00000533	
				17.0	5.83E-03	1.46E-02	4.39E-06	
	2021/7/29	1347-FQ01-1-1	16.8	0.0000463	0.00011	0.0000000344		
			17	0.0000527	0.000132	0.0000000408		
			17.1	0.0000489	0.000125	0.0000000377		
			17	0.0000493	0.000122	0.0000000376		
		2021/7/30	1347-FQ01-2-1	17.2	0.000177	0.000465	0.0000001320	
				16.7	0.000093	0.000215	0.0000000694	
				17	0.00007	0.000174	0.0000000515	
				17	0.000113	0.000285	0.0000000843	
				17.0	8.13E-05	2.04E-04	6.10E-08	
	2021/7/29	1347-FQ01-1-1	16.8	0.00207	0.00493	0.00000154		
17			0.0024	0.006	0.00000186			
17.1			0.00177	0.00454	0.00000136			
17			0.00208	0.00516	0.00000159			
2021/7/30		1347-FQ01-2-1	17.2	0.0024	0.00632	0.0000018		
			16.7	0.0025	0.00581	0.00000187		

			1347-FQ01-2-3	17	0.00248	0.0062	0.00000183		
				17	0.00246	0.00611	0.00000183		
				17.0	2.27E-03	5.63E-03	1.71E-06		
	2021/7/29		1347-FQ01-1-1	16.8	0.000059	0.00014	0.0000000439	GB18485-2014 4 0.1 /	
			1347-FQ01-1-2	17	0.000081	0.000203	0.0000000628		
			1347-FQ01-1-3	17.1	0.0000651	0.000167	0.0000000502		
				17	0.0000684	0.00017	0.0000000523		
	2021/7/30		1347-FQ01-2-1	17.2	0.00389	0.01025	0.0000029100		
			1347-FQ01-2-2	16.7	0.00096	0.00222	0.0000007160		
			1347-FQ01-2-3	17	0.00113	0.00282	0.0000008330		
				17	0.00199	0.0051	0.0000014900		
				17.0	1.03E-03	2.63E-03	7.69E-07		
	2021/7/29		1347-FQ01-1-1	16.8	0.00339	0.0081	0.00000252		GB18485-2014 4 1.0 /
			1347-FQ01-1-2	17	0.00454	0.0114	0.00000352		
			1347-FQ01-1-3	17.1	0.00468	0.012	0.00000361		
				17	0.0042	0.0105	0.00000322		
	2021/7/30		1347-FQ01-2-1	17.2	0.00556	0.0146	0.00000416		
			1347-FQ01-2-2	16.7	0.00258	0.006	0.00000193		
			1347-FQ01-2-3	17	0.00532	0.0133	0.00000393		
				17	0.00449	0.0113	0.00000334		
				17.0	4.35E-03	1.09E-02	3.28E-06		
	2021/7/29		1347-FQ01-1-1	16.8	0.018	0.043	0.00000134	GB18485-2014 4 0.05 /	
			1347-FQ01-1-2	17	0.014	0.035	0.00000108		
			1347-FQ01-1-3	17.1	0.011	0.028	0.00000848		
				17	0.014	0.035	0.00000109		
	2021/7/30		1347-FQ01-2-1	17.2	0.005	0.013	0.00000374		
			1347-FQ01-2-2	16.7	0.016	0.037	0.0000012		
			1347-FQ01-2-3	17	0.012	0.03	0.00000886		
				17	0.011	0.027	0.0000082		
				17.0	0.013	0.031	4.12E-06		
	2021/7/29		1347-FQ01-1-1	16.8	0.95	2.26	0.000748		

	1347-FQ01-1-2	17	0.77	1.92	0.000644		GB14554-
	1347-FQ01-1-3	17.1	1.04	2.67	0.000816	93	2
		17	0.92	2.28	7.36E-04	15	4.9 /
	1347-FQ01-2-1	17.2	0.86	2.26	0.000661		0.33 /
2021/7/30	1347-FQ01-2-2	16.7	1	2.33	0.000748		
	1347-FQ01-2-3	17	1.09	—	0.000826		
		17	0.98	2.44	7.45E-04		
		17	0.95	2.36	7.41E-04		
	1347-FQ01-1-1	16.8	0.019	0.045	0.000015		
2021/7/29	1347-FQ01-1-2	17	0.017	0.042	0.0000142		
	1347-FQ01-1-3	17.1	0.018	0.046	0.0000141		

2021/6/8	N KSC20210602049-A004	17.9	304	0.0237	—	0.0664	9.65 10 ⁻¹²	0.1 TEQ/
	N KSC20210602049-A005	15.5	392	0.029	0.0527			
	N KSC20210602049-A006	16.7	346	0.03	0.0699			

FQ01#	2021/7/29	09:45-09:49	1347-FQ01-1-1	—	GB14554-93 15 2000	2		
		10:08-10:12	1347-FQ01-1-2	550				
		10:35-10:39	1347-FQ01-1-3	550				
		10:58-11:02	1347-FQ01-1-4	550				
	2021/7/30	09:26-09:30	1347-FQ01-2-1	—				
		09:48-09:52	1347-FQ01-2-2	—				
		10:13-10:17	1347-FQ01-2-3	—				
		10:35-10:39	1347-FQ01-2-4	—				

7-1	7-2	7-3						
			FQ01#	0.0 /		0.0 /		
36 /	0.010 /		135 /		0.04 /		98 /	
	0.028 /		0.258 /		4.071 10 ⁻⁵ /		56.8 /	
0.017 /		0.0489 /		7.68 10 ⁻⁶ /		0.0353 /		8.05 10 ⁻⁶ /
6 /		8.5 10 ⁻⁴ /		1.86 10 ⁻⁷ /		8.16 10 ⁻³ /		1.73 10 ⁻⁶ /
6 /		0.0238 /		4.39 10 ⁻⁶ /		4.65 10 ⁻⁴ /		6.10 10 ⁻⁸ /

6.32×10^{-3} / 1.71×10^{-6} / 0.01025 / 7.69×10^{-7} /
 0.0146 / 3.28×10^{-6} / 0.043 / 4.12×10^{-6} /
 GB18485-2014 30 / 100 / 300 /
 100 / 1.0 / 60 / 1.0 / 1.0 / 1.0 / 0.1 / 1.0 /
 0.1 / 1.0 / 0.05 / 2.73 / 7.41×10^{-4} /
 0.053 / 1.44×10^{-5} / 733 GB14554-93
 2 4.9 / 0.33 / 2000
 0.0766 TEQ/ GB18485-2014 0.1 TEQ/
 7-4 7-5

			09:00-09:45	11:00-11:45	13:00-13:45	15:00-15:45		
FQ02#	2021/7/29		1347-FQ02-1-1	1347-FQ02-1-2	1347-FQ02-1-3	1347-FQ02-1-4	GB14554-93 1	
			0.04	0.06	0.06	0.05		
			0.011	0.01	0.009	0.009		
			0.249	0.219	0.252	0.221		
			12	12	11	12		
	2021/7/30		1347-FQ02-2-1	1347-FQ02-2-2	1347-FQ02-2-3	1347-FQ02-2-4	1.5 / 0.06 / 20 GB16297-	
			0.07	0.05	0.08	0.06		
			0.011	0.011	0.01	0.011		
			0.218	0.25	0.22	0.253		
			11	12	12	12		

FQ03#	2021/7/29		1347-FQ03-1-1	1347-FQ03-1-2	1347-FQ03-1-3	1347-FQ03-1-4	1996 : 1.0 /N	
			0.05	0.07	0.06	0.08		
			0.009	0.009	0.01	0.009		
			0.219	0.252	0.222	0.223		
			13	14	14	13		
	2021/7/30		1347-FQ03-2-1	1347-FQ03-2-2	1347-FQ03-2-3	1347-FQ03-2-4		
			0.06	0.07	0.05	0.07		
			0.009	0.009	0.01	0.009		
			0.251	0.221	0.222	0.255		
			14	13	14	13		
FQ04#	2021/7/29		1347-FQ04-1-1	1347-FQ04-1-2	1347-FQ04-1-3	1347-FQ04-1-4		
			0.04	0.06	0.08	0.07		
			0.012	0.013	0.013	0.012		
			0.281	0.251	0.283	0.253		
			14	—	—	13		
	2021/7/30		1347-FQ04-2-1	1347-FQ04-2-2	1347-FQ04-2-3	1347-FQ04-2-4		
			0.08	0.07	0.06	0.05		
			0.01	0.012	0.011	0.01		
			0.281	0.251	0.252	0.285		
			14	—	—	14		
FQ05#	2021/7/29		1347-FQ05-1-1	1347-FQ05-1-2	1347-FQ05-1-3	1347-FQ05-1-4		
			0.07	0.08	0.06	0.05		
			0.013	0.013	—	0.013		
			0.346	0.316	0.318	—		
			14	—	—	14		
	2021/7/30		1347-FQ05-2-1	1347-FQ05-2-2	1347-FQ05-2-3	1347-FQ05-2-4		
			0.07	—	0.08	0.06		
			0.011	0.011	0.012	0.011		
			0.315	0.348	0.319	0.32		
			—	13	14	—		

FQ04# FQ05# 4

4

0.383 /

FQ02#

FQ03#

GB16297-1996

				<10	<10	<10	<10		
3	FQ03#	2022/7/1		221032-FQ01-1-1	221032-FQ01-1-2	221032-FQ01-1-3	221032-FQ01-1-4		
				0.05	0.05	0.05	0.05		
				0.005	0.005	0.005	0.006		
				<10	<10	<10	<10		
		2022/7/2		221032-FQ01-1-1	221032-FQ01-1-2	221032-FQ01-1-3	221032-FQ01-1-4		
				0.05	0.05	—	0.05		
				0.005	—	0.005	0.005		
				<10	<10	<10	<10		
4	FQ04#	2022/7/1		221032-FQ01-1-1	221032-FQ01-1-2	221032-FQ01-1-3	221032-FQ01-1-4		
				0.04	0.05	0.05	0.04		
				0.005	0.005	0.005	0.005		
				12	13	—	12		
		2022/7/2		221032-FQ01-1-1	221032-FQ01-1-2	221032-FQ01-1-3	221032-FQ01-1-4		
				0.04	0.04	0.04	0.05		
				0.005	0.005	0.005	0.005		
				11	13	12	12		

FQ02# FQ03# FQ04# 4 4 FQ01# 14
 0.06 / 0.06 / 1.5 /
 GB14554-93 1
 0.06 / 20

	04#	221032- 04-2-1	53.3	221032- 04-2-2	44.9			
			4	2		54.4 B A		46 B
A	GB12348-2008			2		60 B A	60 B A	
		8	365			2190 /	SO ₂ 0.7 /	NO
1.14 /	0.001 /	219	TEQ/		394.1405 /	SO ₂	0.1210 /	NO
0.5084 /	0.00054 /		25.08	TEQ/				

								1	3 /
				1				30	15
	2		1						98
41'06.71"	28	42'47.11"							98
49'43.55"	28	27'24.25"		2019	7			2020	10
				867				365	8
	421.86				43				
10.19%									
					0.0	/			
36	/			135	/			98	/
	0.258	/						56.8	/
0.0489	/			0.0353	/			8.5	10 ⁻⁴ /
	8.16	10 ⁻³ /						0.0238	/
10 ⁻⁴	/			6.32	10 ⁻³ /				4.65
	0.0146	/						0.01025	/
	0.043	/							
	GB18485-2014							2.73	/
	0.053	/						733	
	GB14554-93			2				15	
0.0766	TEQ/								GB18485-2014
				4					
	0.09	/						0.014	/
15				4					

0.06 /		0.006 /		14
		GB14554-93	1	
			4	
		52.8 B A		45.9 B A
GB12348-2008			2	60 B
A	60 B A			4
		54.4 B A		46 B
A	GB12348-2008			2
	60 B A	60 B A		
				0.1 /
			/	
				0.05 /
		0.315 /	/	
GB18597-2001				
	0.365 /			
0.8 /		2021		

100%

394.1405 / SO₂ 0.1210 / NO 0.5084 /
0.00054 / 25.08 TEQ/
2190 / SO₂ 0.7 / NO 1.14 /
0.001 / 219 TEQ/

GB14554-93

GB18485-2014

GB12348-2008

2.9.6

1

2

3

4

- ¿_ñó@ño P \$JĐ?V42SN° ø\$ 42 P " "RĐS%_ °1